

23 - 26

EMERGENCY SHUT-OFF VALVE



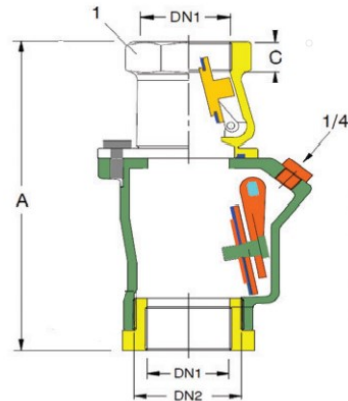
CE Ex II 2G

The CAST IRON emergency shut-off valve is installed in the fuel delivery line and is designed to protect from danger of product loss by closing the flow of fuel in case of accident, damage or fire.

Shear valve is available in single poppet model (23), or double poppet model (26) when the closure of both lines from the underground storage tank (inlet) and to dispenser (outlet) is required.

The valve allows full flowing capacity with normal operation.

It's a Protection System in according with Directive 2014/34/EU and harmonized standard EN ISO 13617-2.



Specification

PRODUCT	Mod. 23	Mod. 26
STANDARD MODEL CODE	090900	090905
PTFE MODEL CODE	090900 PTFE	090905 PTFE
THREAD (DN 1)	1"1/2 BSP F	1"1/2 BSP F
THREAD (DN 2)	2" BSP F	2" BSP F
HEIGHT (A)	160 175	160 175
CLOSE SYSTEM	1 POPPET	2 POPPETS
FREE CUBE SPACE mm	120	120
FLOW l/min (5 bar)	685	550

Chemical Suitability

- Standard Model is for traditional fuel without additives or compatible chemical products

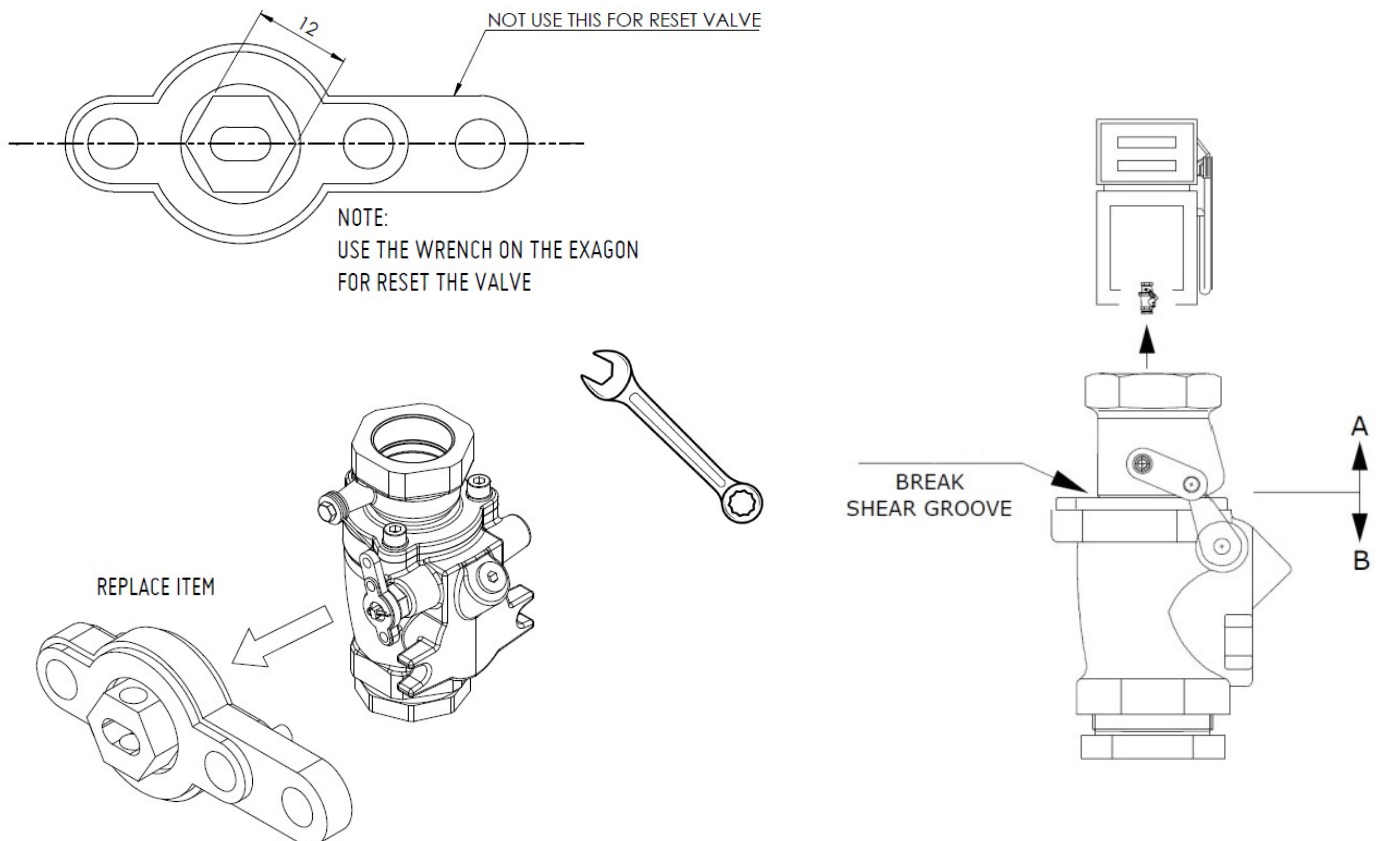
ON REQUEST:

- "PTFE" coated model is for special fuel, non-aggressive solvents or chemical products

PART	Fig. 23 & 26	Fig. 23 & 26 PTFE
BODY	CAST IRON	CAST IRON + PTFE COATING
SCREWS	STAINLESS STEEL	STAINLESS STEEL
POPPET	BRASS	BRASS + PTFE COATING
SEAL	VITON®	PTFE
POPPET SCREWS	STAINLESS STEEL	STAINLESS STEEL
SUPPORT	STAINLESS STEEL	STAINLESS STEEL

Installation

- Protection System is unidirectional, it is only for vertical installation.
- The valve shall be installed under the dispenser in presence of a submersible pumping system.
The shut off device closes immediately the supply line in case of accident.
- It's important to screw the pipe not the valve, hold valve with max 20Nm.
- After installing the valve (max 20Nm), load the spring and secure the safety pin. **Remove system pressure before loading the spring.**
- The valve is normally supplied open and also is provided with test port for air-testing services (BSPT 1/4").
- The body must be rigidly anchored to a structural member within the island (B zone) and also to the dispenser (A zone).
- Shear groove must be at the same level of pedestal island (+- 10mm).
- If the valve will remain closed, could damage the pump system.
- For correct installation follow the Directives and product User Manual.
- For custom application or maintenance write to: quality@ridart.it.
- Declaration of Conformity and User Manuals are available on: www.ridart.it/support



Caution

Failure to provide a proper fastening of the valve may result in the valve remaining open or when a severe impact occurs the inlet pipe could break causing a hazardous situation.

Before fixing pipes to the valve be sure to use a gasoline-resistant compound for threads on inlet and outlet pipe. Valve is designed even to allow pressure testing in the line by means of a ¼" BSPT port plug.

After pressure testing, remove system pressure before reloading the spring.

Do not use PTFE pipe tape which may lead to an overtightening during the installation and as a result of that the valve breaking.

Use only connection parts (inlet/outlet pipes or fittings) manufactured in accordance with the European standards in order to avoid risks of wrong connections causing damages to the valves or pipes that may cause hazardous conditions.

WARNING: do not overtighten during installation as this may damage the valve causing an improper operation.

Features

The best performances allowed by the new regulation:

- Max operational temperature 60°C.
- Max operational pressure 6 bar.
- Pin fusion temperature 72 °C.
- Separating force 450/500 N

Maintenance

- Periodically check the device is necessary to remove possible dirt.
- Always replace the product after fire or deflagration.
- In case of tampering warranty expires and safety protection is not guaranteed.

CODE	SPARE PARTS
090901	Upper Connection Mod. 23
090906	Upper Connection Mod. 26