

# 1010 EN P Ball Float Valve with In-Line Deflagration Flame Arrester



CE  G IIB3

The ball float valve 1010 EN P is normally used in the vapor recovery line (Stage 2). It is designed to protect the vapor recovery line from fuel overflowing hazard during loading operation. It's a Protection System with ribbon coil deflagration in-line flame arrester according with Directive 2014/34/EU and harmonized standard EN ISO 16852:2016.

- Used for hydrocarbons or chemical pipeline.
- Stage II vapor recovery compliant.
- The Flame Arrester avoids propagation of fire into the piping.
- Surface Protection System is for all ATEX zone (0, 1 and 2).

### The best performances allowed by the new regulation

- Max distance from the potential ignition is 50 pipe's diameter.
- Max operational pressure (relative) is 0,1 bar.



## Gas & Vapor compatibility

Inflammable gases and vapours classification is necessary to correct use of flame arrester. UE-Type Examination Certificate EPT 18 ATEX 3053 X is for Explosion Group "IIB3" tested with Ethylene and compatible for all gas with MESG > 0.65 mm for example: Ammonia, Industrial methane, Blast-furnace gas, Carbon monoxide, Propane, Butane, Pentane, Ethane, Eptane, Iso-octane, Decane, Benzene, Xylene, Cyclohexane, Acetone, Ethyl-methyl-ketone, Methyl acetate, Ethyl acetate, Normal propyl acetate, Normal butyl acetate, Amyl acetate, Chloroethylene, Methanol, Ethanol, Iso Butanol, Normal Butanol, Amyl alcohol and Ethyl nitrite. Use only for gas or vapor with MESG > 0.65 mm. Burning rating BC=b,  $t_{BT}=1$  min. Max operational temperature 60°C.

## Chemical Suitability

- Standard model is for traditional fuel without additives.

### ON REQUEST:

- "PTFE" coated model is for special fuel, non-aggressive solvents or chemical products.

1010 EN P  
ALUMINIUM

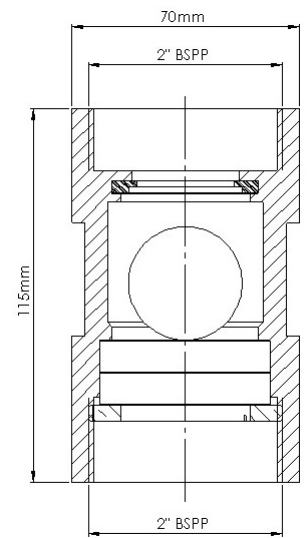


1010 EN P  
PTFE COATED



## Specification

PART	1010 AL	1010 PTFE
CODE	094940 EN P	094940 EN P PTFE
BODY	ALUMINIUM	ALUMINIUM + PTFE COATING
SUPPORT	BRASS	BRASS + PTFE COATING
RIBBON COIL	STAINLESS STEEL	STAINLESS STEEL
FLOATING	PP HD	PP HD
SEAL	VITON®	PTFE
PROTECTED SIDE	FLOATING SIDE	FLOATING SIDE
AIR FLOW 2" PIPELINE (50 mbar)	l/min 1500	l/min 1500
BSPP THREAD	2" F X 2" F	2" F X 2" F



## Installation

- The float valve must be installed in vertical position on the manhole lid.
- The valve allows the vapor to go in both directions and the liquid in one direction only. The ball float has in fact the function to close the vapor line in the event of tank overfilling.
- Protection System is unidirectional, the safety side is the floating side.
- For correct installation follow the Directives and product User Manual.
- For the installation of flame arresters it is necessary to strictly comply with the L/D ratio (pipe length/pipe diameter) and insure that the distance between potential ignition sources and the flame arrester does not exceed the max ratio of 50 L/D that corresponds to explosion group IIA and IIB3 (NEC groups D to C) according to EN ISO 16852.
- Explosion Group is "IIB3" in according with EN ISO 16852 (MESG > 0.65 mm).
- Contact our technical department for custom application or maintenance by email to:  
[quality@ridart.it](mailto:quality@ridart.it).
- Product Certification, Declaration of Conformity and User Manuals are available on:  
[www.ridart.it/support](http://www.ridart.it/support).

## Maintenance

- Always replace the product after fire or deflagration.
- In case of tampering warranty expires and safety protection is not guaranteed.